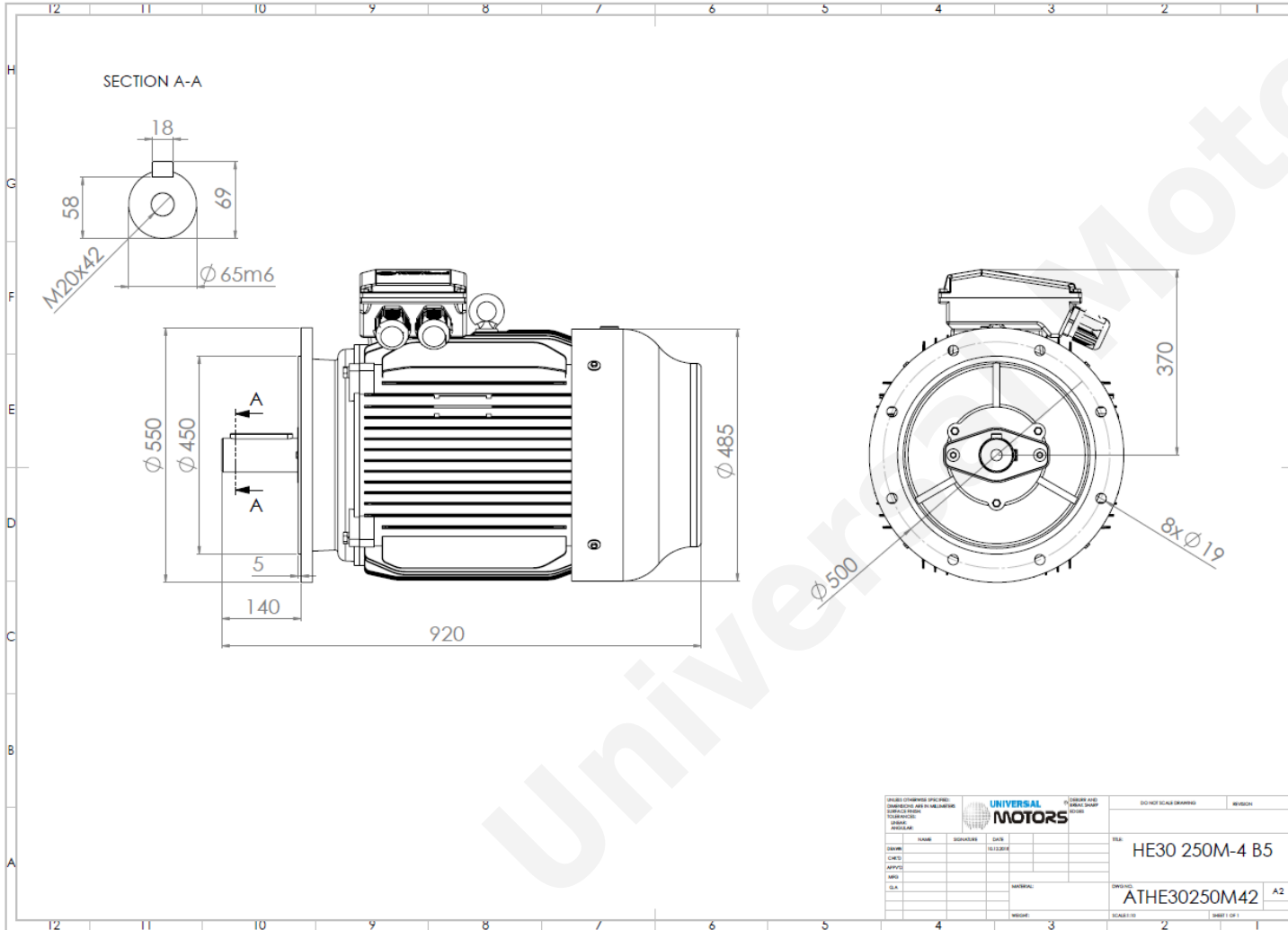




TECHNICAL DATA

Three Phase Electric Motors - Cast Iron Frame
 HE30 250 M-6 IE2
 37 kW / 50 Cv
 980 RPM



Motor type:	HE30 250 M-6 IE2
Output:	37 kW / 50 Cv
Speed (min^{-1}):	980 RPM
Frequency:	50 Hz
Voltage:	400 V
Current:	69 A
Power factor ($\text{Cos } \phi$):	0.84
Poles:	6
Insulation class:	F
Temperature rise Class:	B
Efficiency 50%:	91.9 %
Efficiency 75%:	92.6 %
Efficiency 100%:	92.2 %
Torque:	361 N.m
Tstarting/Tnominal:	2.1
Istarting/Inominal:	7.1
Tmaximum/Tnominal:	2.1
Noise:	67 Db(A)
Weight:	405 Kg
Bearing DE:	6314 C3
Bearing NDE:	6314 C3

UNIVERSAL MOTORS		DESIGN AND DRAWING		REVISION	
UNIVERSAL MOTORS		UNIVERSAL MOTORS		UNIVERSAL MOTORS	
NAME	DESIGNER	DATE	REV.	HE30 250M-4 B5	
DATE	REVISION				
APPROV.					
CHK.					
D.A.				ATHE30250M42 A2	
SCALE: 1:1	SHEET 1 OF 1				

Regime - S1

Altitude - 1000m

Environment Temperature - 40°C

CONTACTS:

UNIVERSAL MOTORS Tel: +351 252 299 080
 Rua de São Brás,745 Fax: +351 252 299 089
 4480-782 VILA DO CONDE Mail: geral@universalmotors.pt

* References applied only in the UK